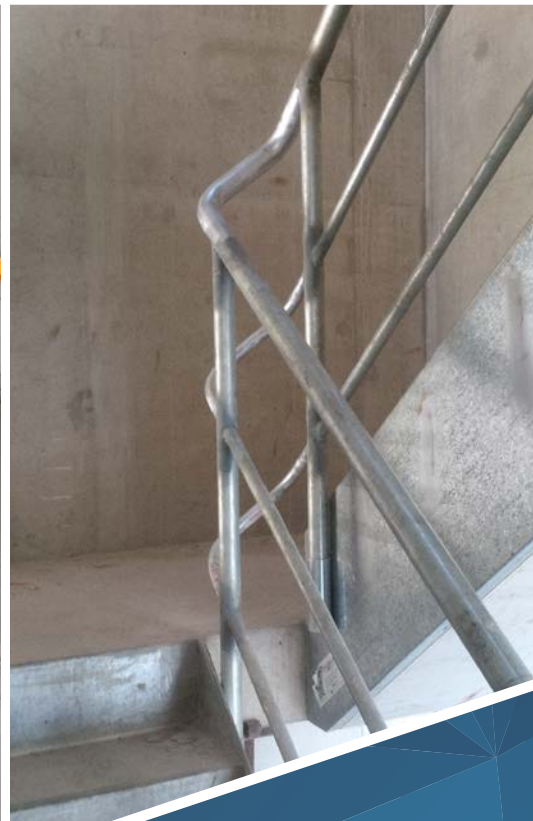
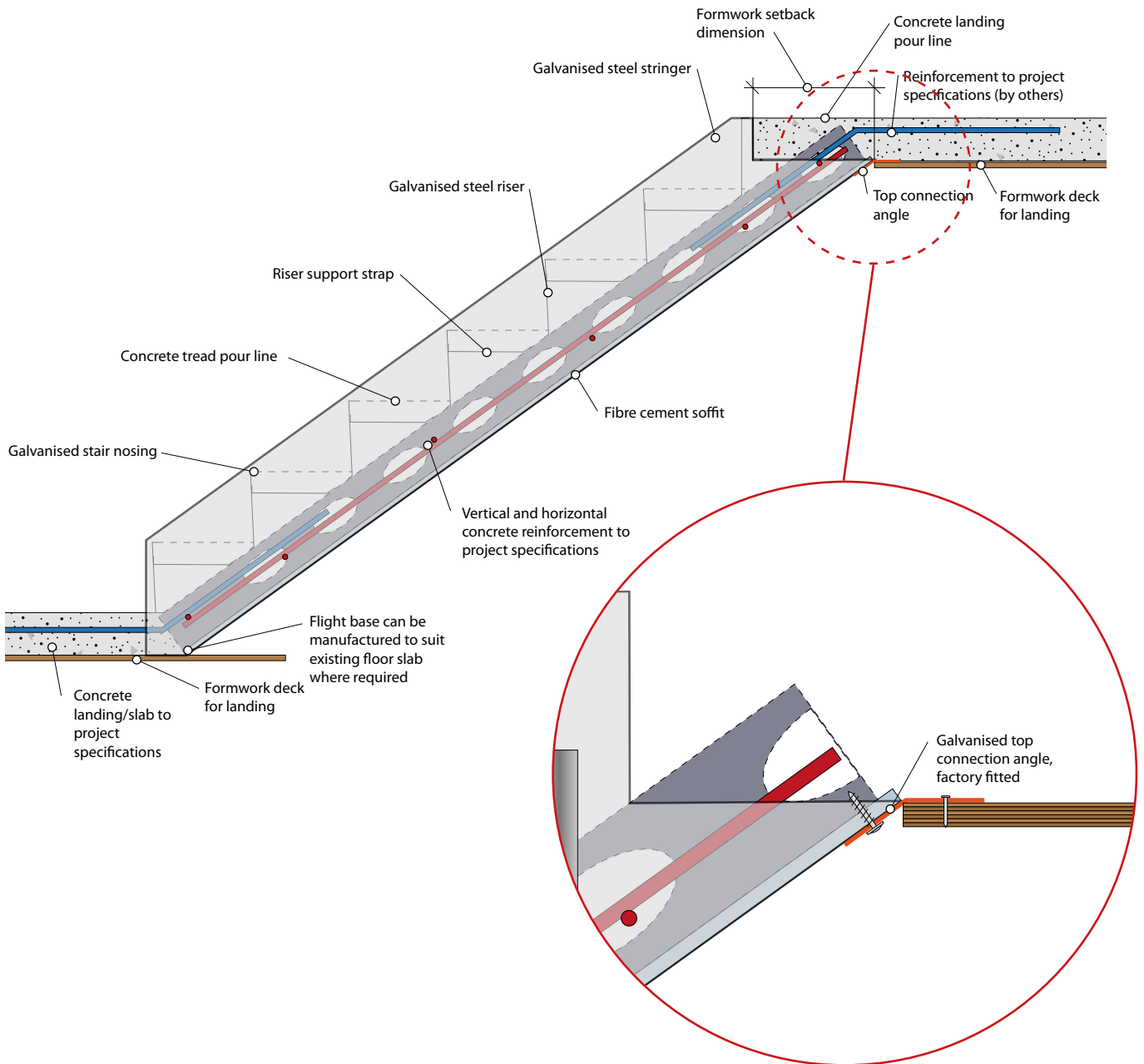


Standard Details for **FAST TREAD** Preformed Stairs

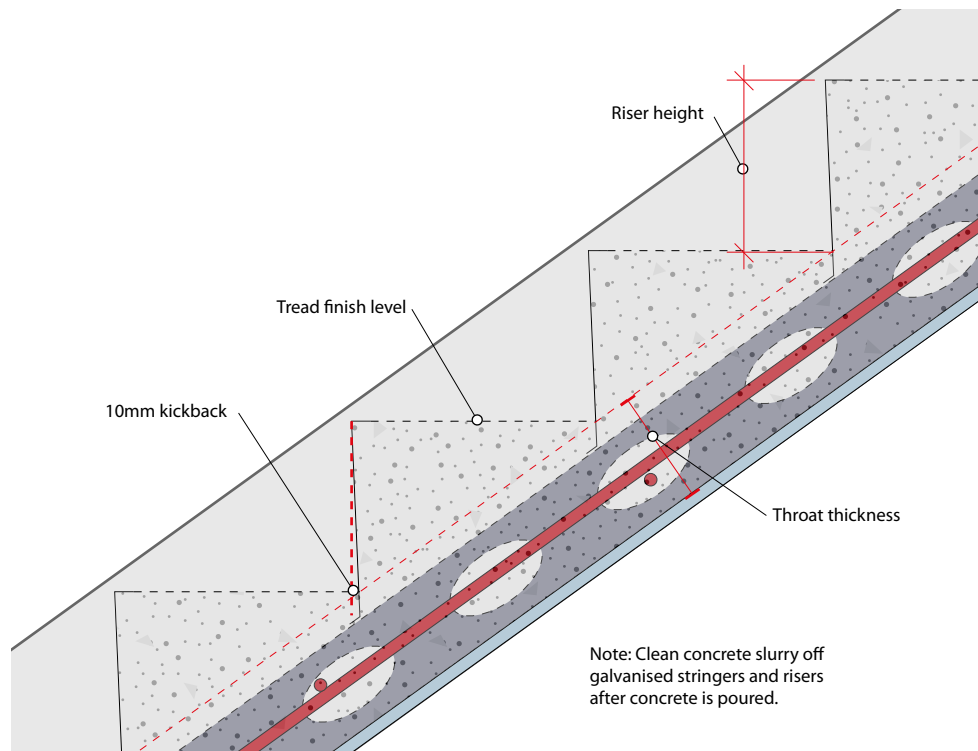
REV.7-050517



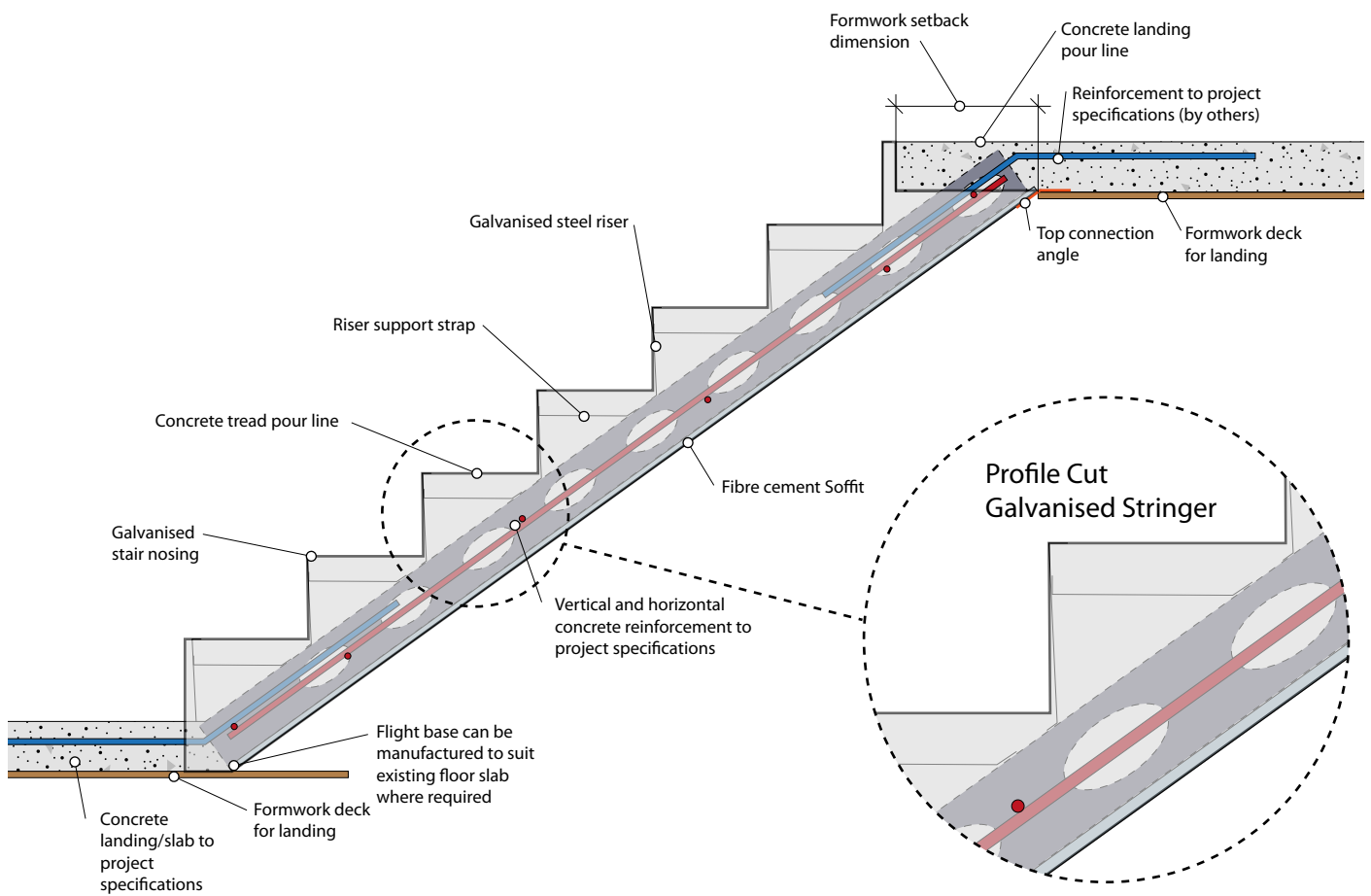
1.1 FAST TREAD TYPICAL LANDING CONNECTION DETAIL



1.2 FAST TREAD TYPICAL RISER DETAIL



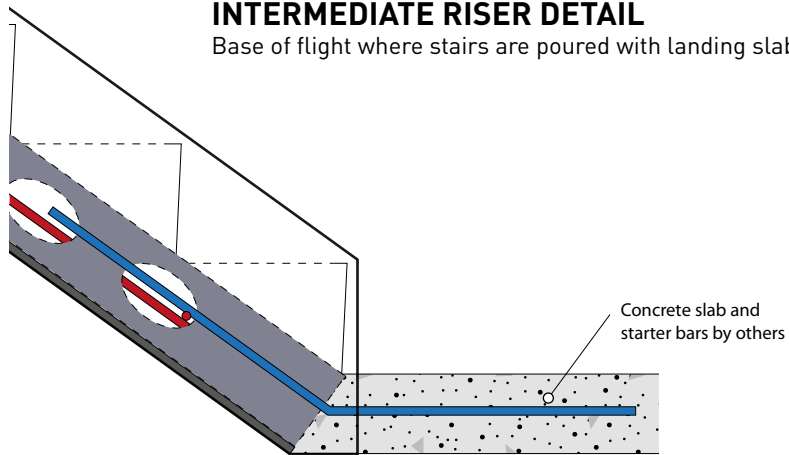
1.3 FAST TREAD PROFILE CUT STRINGER DETAIL



1.4 BOTTOM RISER DETAIL OPTIONS

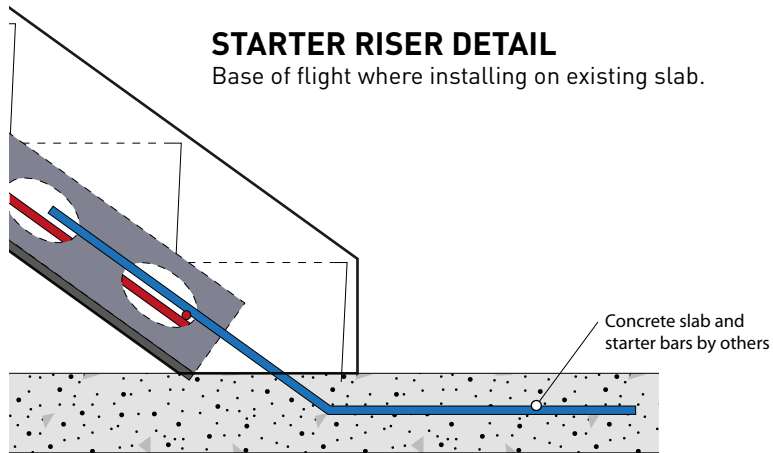
INTERMEDIATE RISER DETAIL

Base of flight where stairs are poured with landing slab.

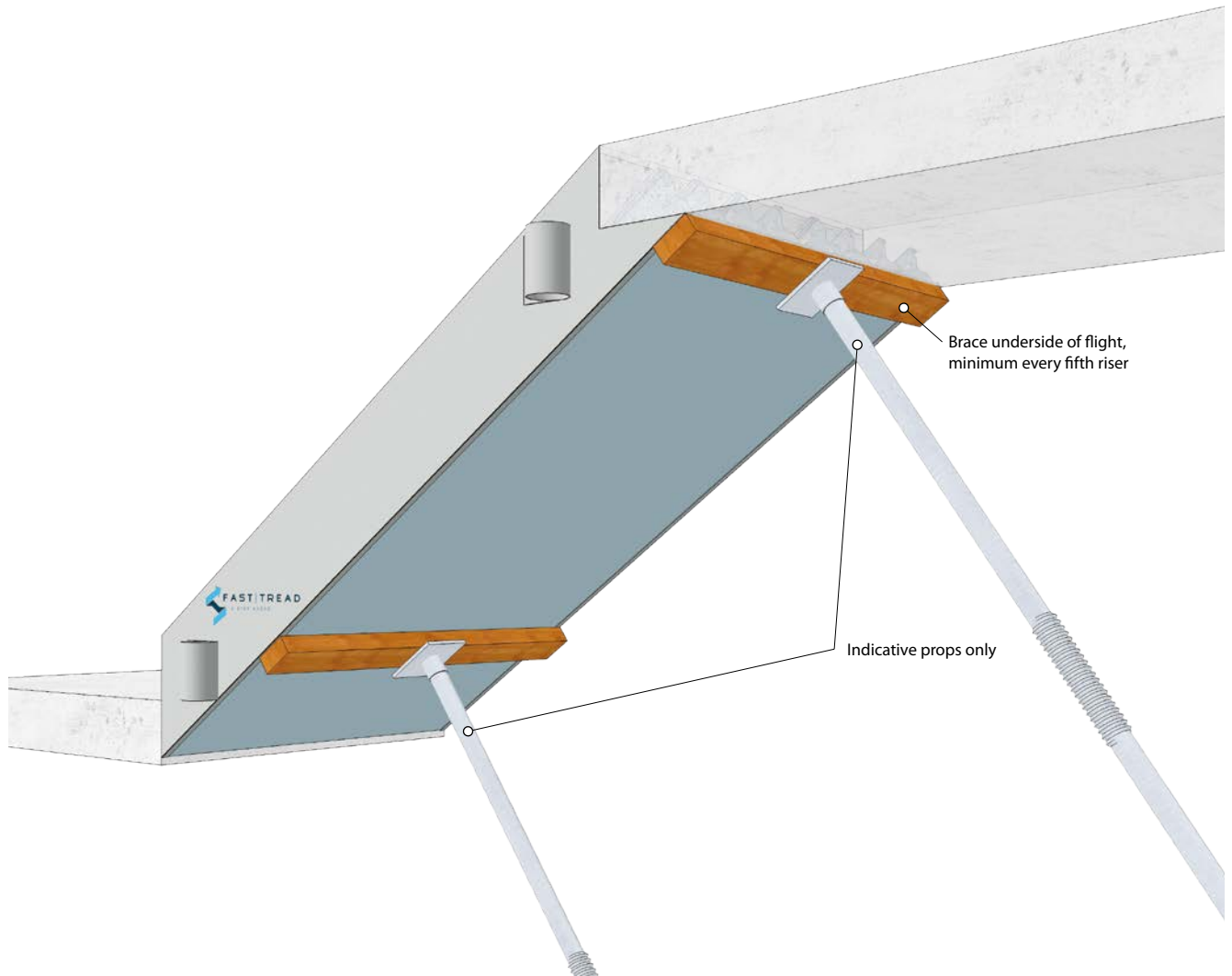


STARTER RISER DETAIL

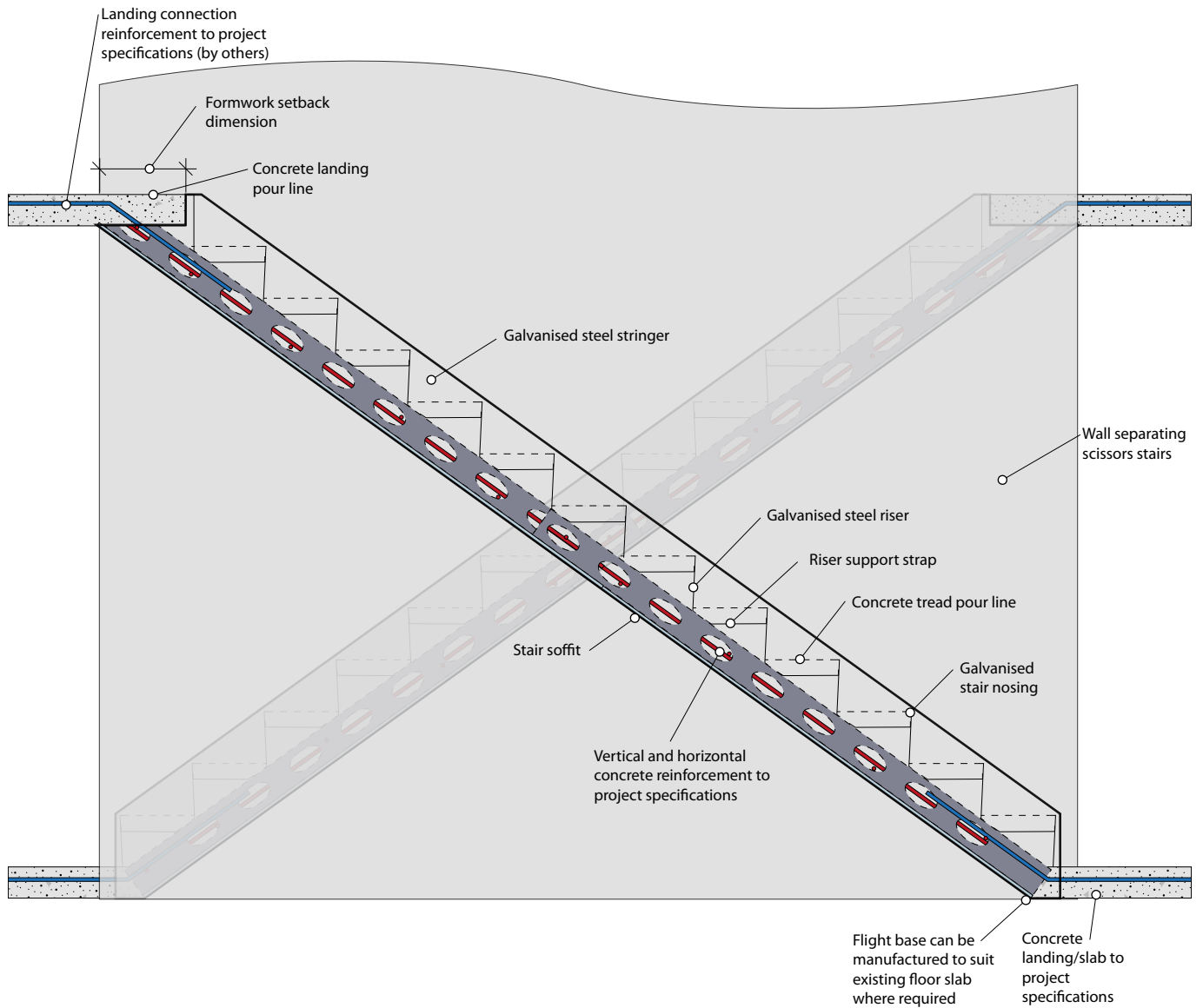
Base of flight where installing on existing slab.



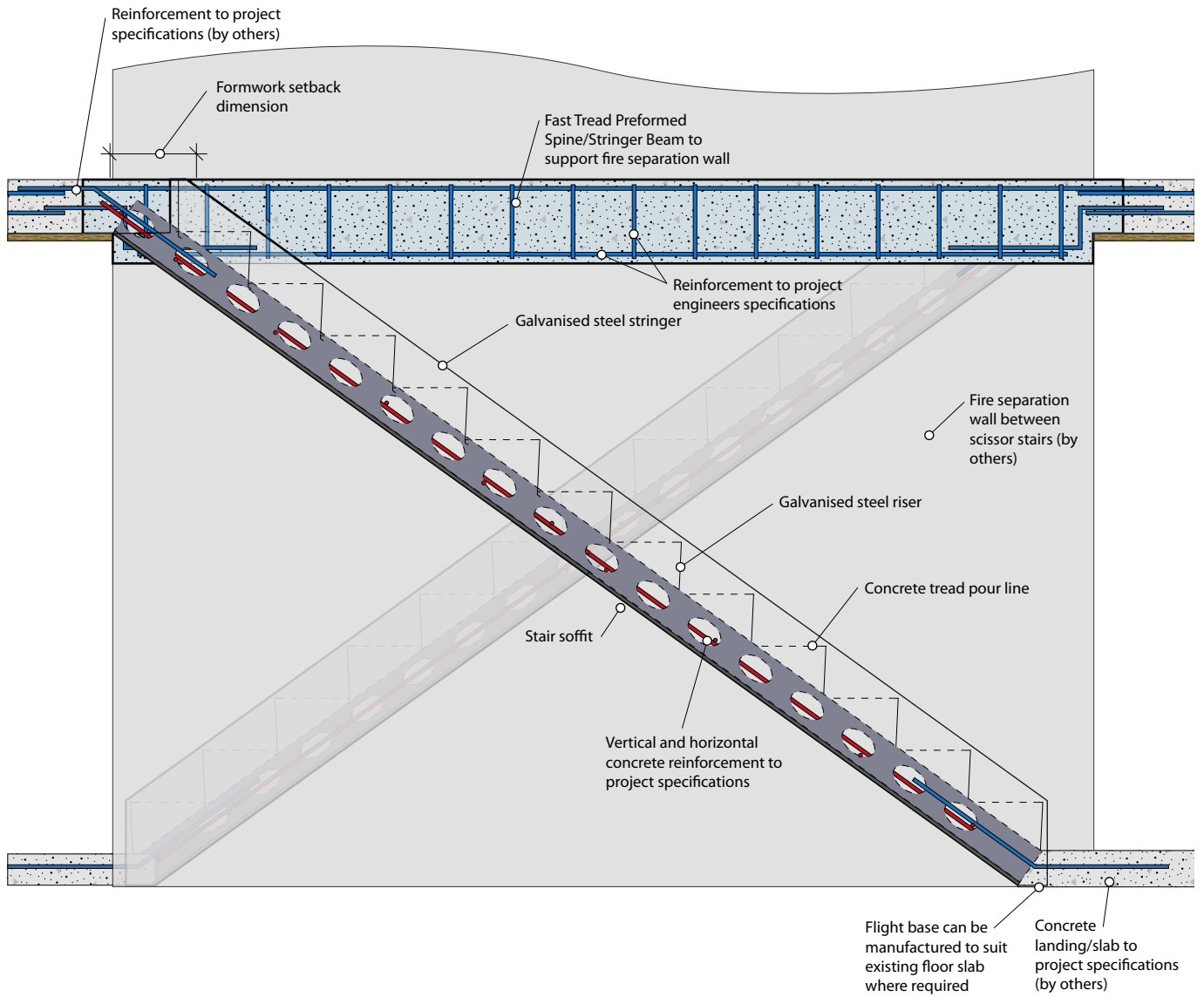
2.1 FAST TREAD INDICATIVE PROPPING DETAIL



3.1 FAST TREAD TYPICAL SCISSOR STAIR DETAIL



3.2 FAST TREAD TYPICAL SCISSOR STAIR DETAIL



3.3 FAST TREAD PREFORMED CONCRETE BEAM

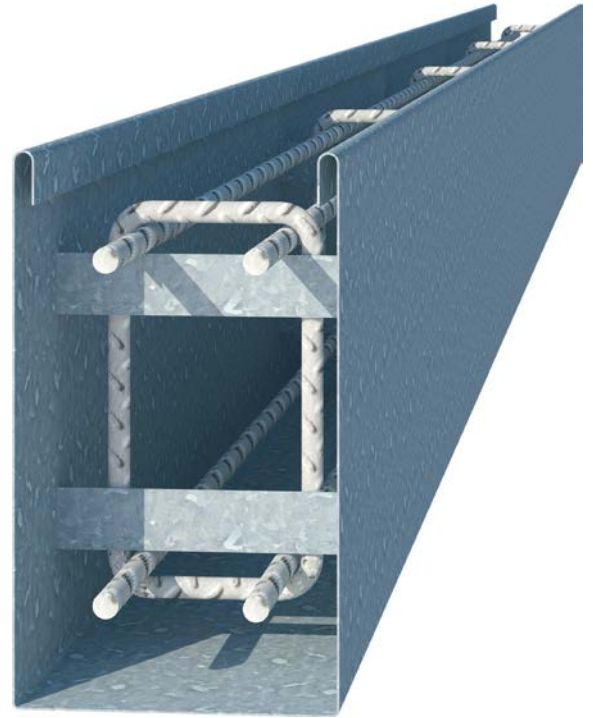
Another quality Prefabricated Formwork system.

Fast Tread® Preformed Concrete Beams, generally used in conjunction with Fast Tread® Scissor Stairs, are manufactured for supporting the spine or dividing wall between Scissor Stairs in Multi-Level Fire Stair applications.

Fast Tread® Preformed Concrete Beams are manufactured to your project requirements and specifications, consisting of galvanised steel sides & soffit with internal steel reinforcement sized in accordance with your engineer's specifications.

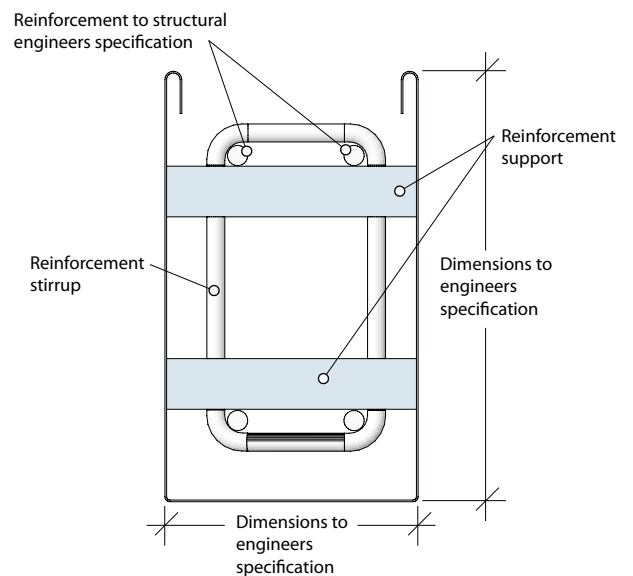
BENEFITS;

- Easy to order
- Manufactured to your requirements
- Speed – Reduce time in your construction program
- Manufactured to BCA requirements
- Single concrete pour
- Durable galvanised steel sides & soffit.
- Clean seamless finish.

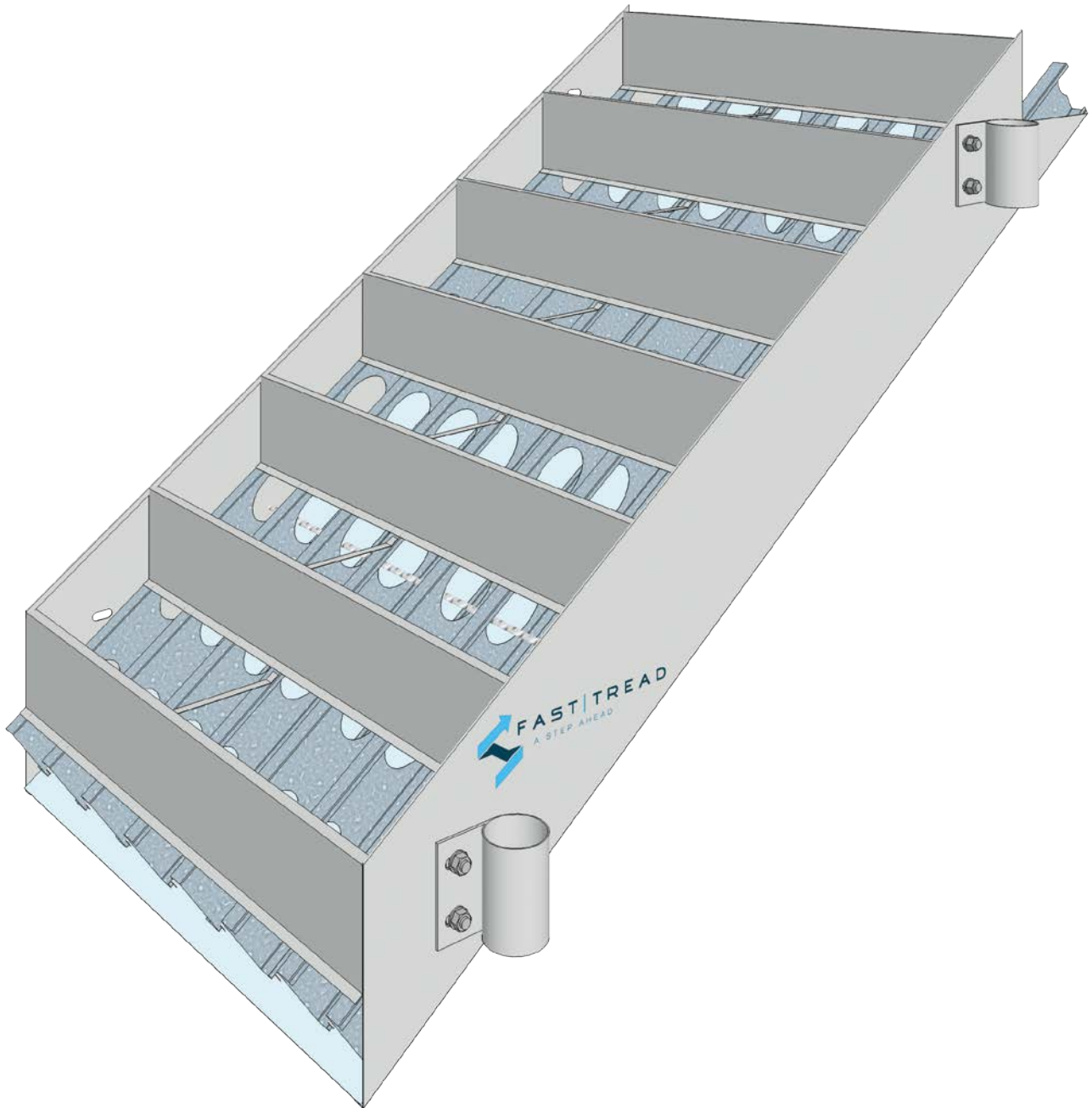


**FASTER,
SAFER,
CLEANER...**

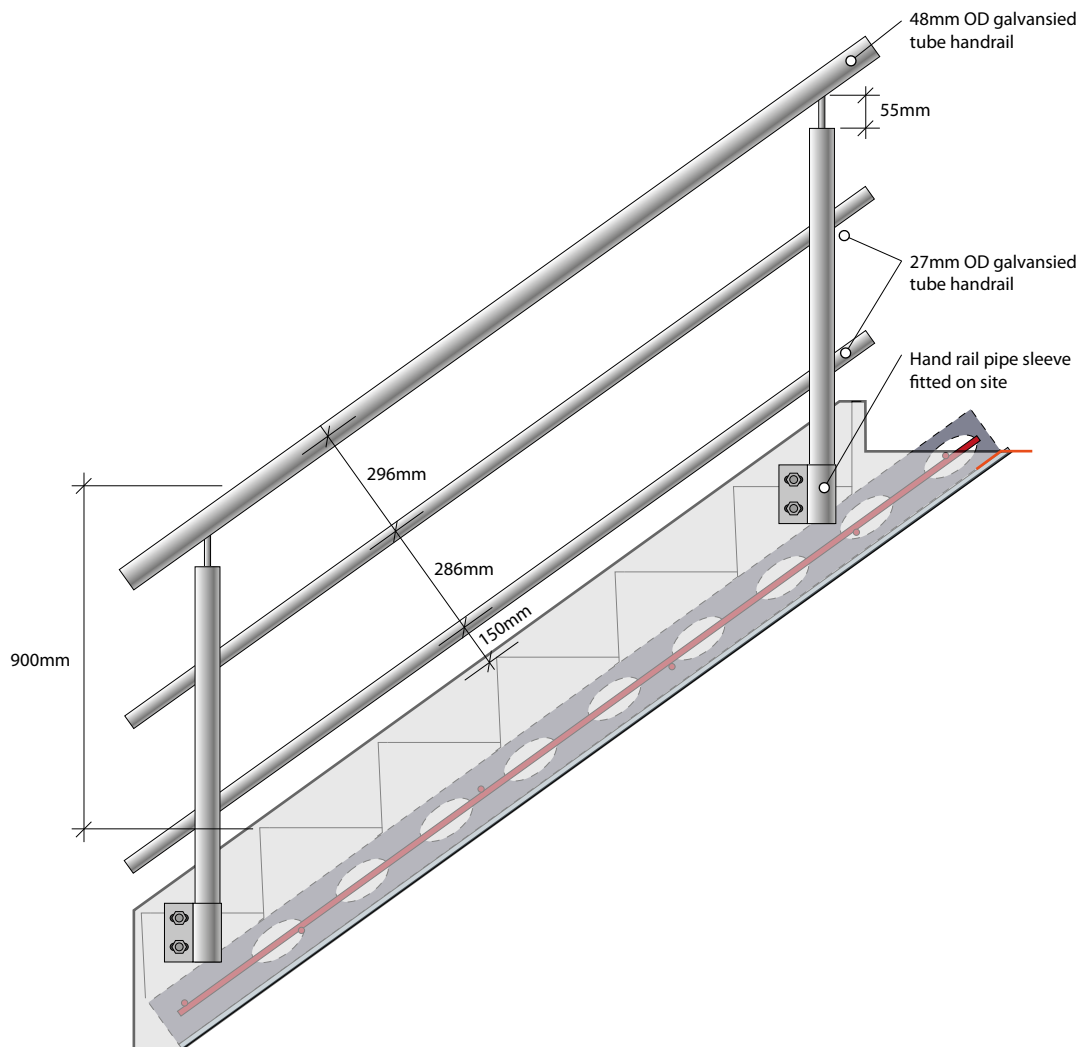
**Contact us today to discuss your requirements:
sales@fasttread.com.au or 1300 751 701.**



4.1 FAST TREAD TYPICAL STAIR CASE WITH HAND RAIL BRACKETS

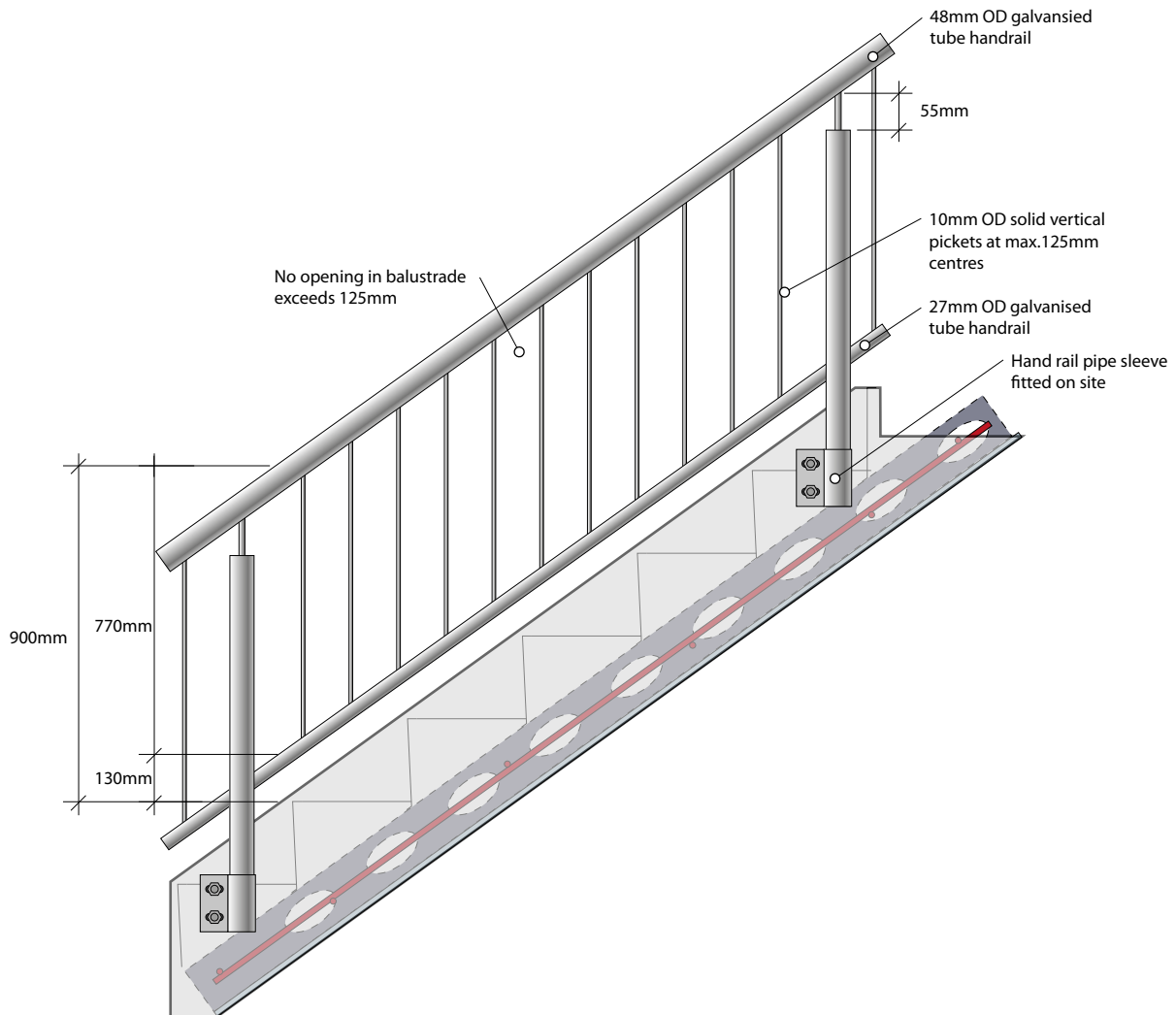


4.2 FAST TREAD TYPICAL 3-RAIL HAND RAIL DETAIL



- All rails manufactured and intalled in accordance with:
- BCA (D2.16 Balustrade and other Barriers)
 - AS1428.1 - 2009 (12. Handrails)
 - AS1657. 2013 (6.2.1 Guard Railing)

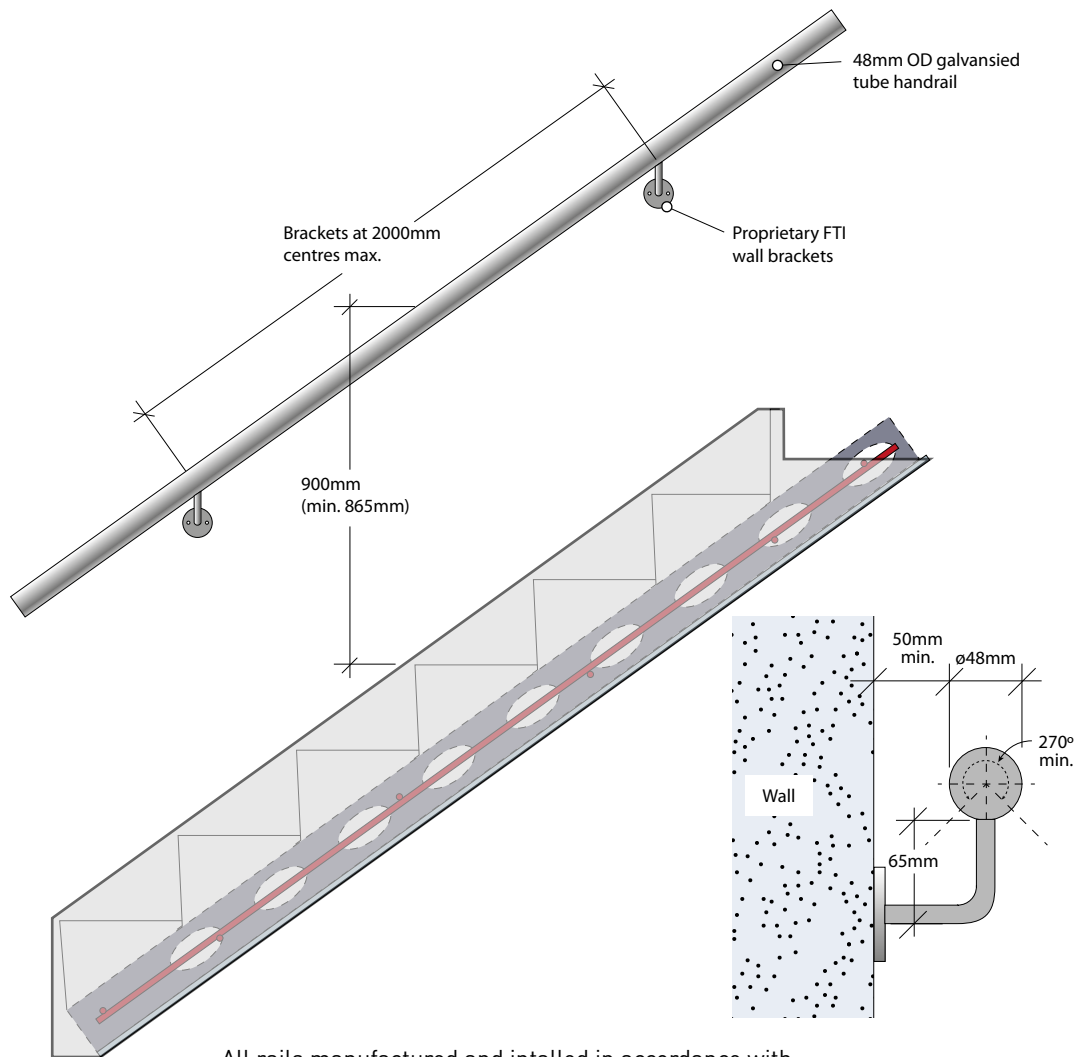
4.3 FAST TREAD TYPICAL VERTICAL PICKET HAND RAIL DETAIL



All rails manufactured and intalled in accordance with:

- BCA (D2.16 Balustrade and other Barriers)
- AS1428.1 - 2009 (12. Handrails)
- AS1657. 2013 (6.2.1 Guard Railing)

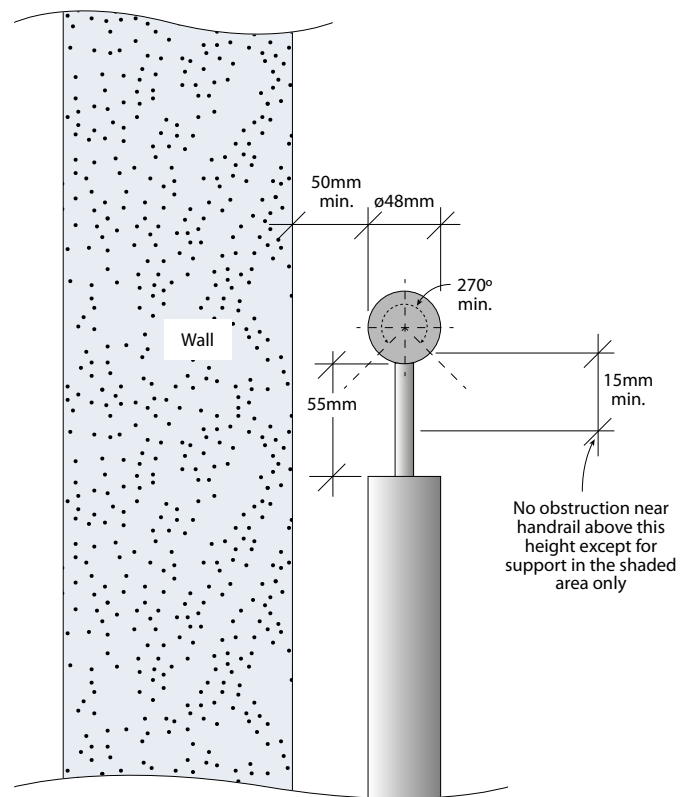
4.4 FAST TREAD TYPICAL WALL MOUNT HAND RAIL DETAIL



All rails manufactured and intalled in accordance with:

- BCA (D2.16 Balustrade and other Barriers)
- AS1428.1 - 2009 (12. Handrails)
- AS1657. 2013 (6.2.1 Guard Railing)

4.5 HAND RAIL CROSS SECTION DETAIL



All rails manufactured and intalled in accordance with:

- BCA (D2.16 Balustrade and other Barriers)
- AS1428.1 - 2009 (12. Handrails)
- AS1657. 2013 (6.2.1 Guard Railing)